



# AGRI

*Supporting Farmers  
With Innovative Solutions*

## Sheep Catalogue



[www.jfcagri.com](http://www.jfcagri.com)



Keep up to date  
on all of **JFC Trade  
Shows and Events.**

**FOLLOW US ON SOCIAL MEDIA!**





# Feeders and Feed Equipment



# Lamb Teat Feeders

The JFC Lamb Teat Feeders offer an efficient way of supplying milk to several lambs at once. Each feeder is fitted with a lamb teat to deliver milk by gravity feed. The teats encourage natural sucking action allowing milk to be delivered to the lamb at an optimum rate.

Each feeder is fitted with 2 sturdy hooks for mounting on a standard gate or fence making them extremely versatile for use around the farm. For hygiene purposes they are designed with minimum crevices making them easy to clean and can be stored upside down when not in use for effective draining and drying.

Available as reservoir or compartment feeders.

## JFC Lamb Teat

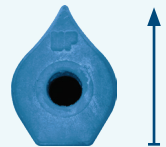
CODE CT8

- Manufactured from natural rubber it has a soft texture but is sufficiently durable to last a complete lambing season
- Openings on each side encourage the lamb to correctly place the teat in its mouth, thereby reducing leakage.
- Pull-through teat can be used on any feeder with a 20mm Ø opening.



## NOTE

Insert teats with point facing upwards.  
It is recommended to replace teats after each season.





## Teat Feeders

CODE	CAPACITY	DIMENSIONS (MM)	TYPE
GF01-CT8	8 Ltr. / 1.75 Gal.	325 W x 290 H x 240 D	Reservoir
GFC04-CT8	12 Ltr. / 2 Gal.*	705 W x 355 H x 375 D	Compartment
GF06-CT8	30 Ltr. / 6.5 Gal.	832 W x 450 H x 330 D	Reservoir
GFC06-CT8	18 Ltr. / 4 Gal.*	930 W x 355 H x 425 D	Compartment
GF10-CT8	50 Ltr. / 11 Gal.	914 W x 508 H x 302 D	Reservoir
GFC10-CT8	30 Ltr. / 6.5 Gal.*	1350 W x 355 H x 550 D	Compartment



GFC06-CT8

\*Working Capacity

## Feed Equipment

JFC have developed a range of feeders suitable for sheep. Manufactured from tough, impact-resistant, medium density polyethylene these feeders are extremely durable and capable of withstanding severe impact. The fracture resistant material and rounded edge design ensures animal safety. Suitable for both indoor and outdoor applications, each feeder is finished with a smooth, seamless coat to reduce feed build up and for ease of cleaning.

### Corri-Feed Troughs

CODE	CAPACITY	DIMENSIONS (MM)
CFT-225	40 Ltr. / 9 Gal.	2300 L x 225 W
CFT-300	70 Ltr. / 15 Gal.	2300 L x 300 W
CFT-375	110 Ltr. / 24 Gal.	2300 L x 375 W



- Ideal for feeding in the shed along aisles or passageways.
- Strong and versatile. Capable of withstanding heavy impact.
- Minimises waste.



## Ground Feed Troughs

CODE	CAPACITY	DIMENSIONS (MM)
FT3	15 Ltr. / 3 Gal.	1000 L x 300 W x 155 D
FT6	30 Ltr. / 6.5 Gal.	1854 L x 279 W x 127 D



- Extremely durable and are suitable for dry and wet feed applications.
- Will not rust or rot like traditional metal and wooden feeders.
- Allows animals to feed in their natural position.

## Gate Feeders

JFC Agri have developed a range of gate feeders suitable for sheep, goats and pigs. Manufactured from tough, impact-resistant, medium density polyethylene these feeders are extremely durable and capable of withstanding even severe impact. The fracture resistant material and rounded edge design ensures animal safety. Suitable for both indoor and outdoor applications, each feeder is finished with a smooth, seamless coat to reduce feed build up and for ease of cleaning.

### Mini Creep Feeder

CODE	CAPACITY	DIMENSIONS (MM)
CF80	40kg	790 W x 460 D x 710 H

- Ad-lib feeding process.
- Holds up to 2 bags of meal (40kg capacity).
- Keeps feed dry in wet weather.
- Galvanised hanging brackets allow feeder to be moved easily.



### Mini Hay Feeder

CODE	CAPACITY	DIMENSIONS (MM)
HF80	80 Ltr. / 17 Gal.	790 W x 460 D x 710 H

- Ad-lib feeding process.
- Rear fill for farmer safety.
- Galvanised hanging brackets allow feeder to be moved easily.





## Gate Hay Feeder

CODE	CAPACITY	DIMENSIONS (MM)
GFH01	100 Ltr. / 22 Gal.	920 W x 500 H x 430 D

- Feeding partitions minimise hay wastage without restricting the distribution of hay.
- Reinforced hooks fitted to give extra stability and prevent animal from knocking feeder.
- Ideal for use with JFC hutch frames.



## Gate Feed Trough

CODE	CAPACITY	DIMENSIONS (MM)
GFT1	23 Ltr. / 5 Gal.	711 W x 381 H x 304 D
GFT	45 Ltr. / 10 Gal.	1422 W x 381 H x 304 D

- Can be easily hung on a gate or fence.
- Reinforced hooks fitted to give extra stability and prevent animal from knocking feeder.
- Ideal for use with JFC hutch frames.

GFT1



GFT



## Sheep Haybell

CODE	CAPACITY	DIMENSIONS (MM)
HB02	1 Standard Hay Bale	1800 Ø x 1500 H

- Designed to fit over a standard round bale.
- Protects hay in all weather conditions.
- Minimises wastage due to trampling and fouling.
- It is designed with 10 feeding ports which allow up to 25 sheep to feed simultaneously.
- No metal components making it extremely safe for use with animals.
- Easy to manoeuvre it allows easily flexible positioning in the paddock or field.



## Mini Sheep Haybell

CODE    DIMENSIONS (MM)

HB04    1250 Ø x 1000 H

**NEW  
PRODUCT**

- Protects hay in all weather conditions.
- Minimises wastage due to trampling and fouling.
- Designed with 6 feeding ports.



## Drinkers & Troughs

### Key Features

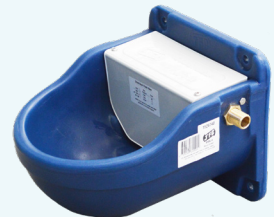
- Designed with rounded edges for ultimate animal safety.
- High freeze / thaw cracking resistance.
- Unique double wall bowl extremely impact resistant. (DBL4, DBL4-O, DBL5, DBL8, DBL9 & DBL8-H)
- Mounting holes or brackets provided for secure fitting and easy installation.



### Micro Drink Bowl

CODE	CAPACITY	DIMENSIONS (MM)	COLOUR OPTIONS
DBL4	4 Ltr. / 0.9 Gal.	254 W x 228 H x 330 D	

- DBL4 with JBV1 brass valve refills in 20 seconds@ 3 bar pressure (9L/min - Max 4 Bar).





# Protection Bracket

CODE	SUITABLE FOR	DIMENSIONS (MM)
PB01	DBL4	375 W x 310 H x 350 D

- Galvanised steel bracket that protects the bowl from damage.

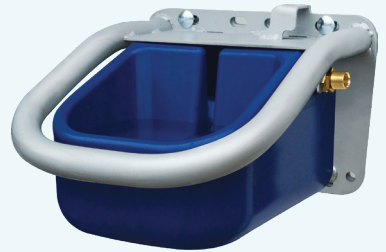


# Dumpy Tip-Over Drinker

CODE	CAPACITY	DIMENSIONS (MM)
DBL9*	3.5 Ltr. / 0.9 Gal.	360 W x 230 H x 340 D

\*Water connection fitting not included.

- Bowl swings 180° to empty contents.
- Refills in 20 seconds @ 3 bar pressure (9L/min). Maximum water pressure = 4 Bar.
- Integrated protection bracket.
- Float valve is fitted to protection bracket.



**AWARD WINNING  
PRODUCT**



## Conventional Drink Bowl

CODE	CAPACITY	DIMENSIONS (MM)	COLOUR OPTIONS
DBL	16 Ltr. / 3.5 Gal.	400 W x 340 H x 395 D	

Refills in 1 minute 36 seconds @ 3 bar pressure (10L/min).



## Conventional Drink Bowl Protection Bracket

CODE	SUITABLE FOR	DIMENSIONS (MM)
PB03	DBL / DBLFF	492 W x 470 H x 545 D

Galvanised steel bracket that protects the bowl from damage.



## Sheep Drink Bowl

CODE	CAPACITY	DIMENSIONS (MM)
DBL2	29.5 Ltr. / 6.5 Gal.	1250 W x 235 H x 237 D

- Refills at 5L/min @ 3 bar pressure.
- Can be placed between two zoned areas giving several animals simultaneous access to water.



# Water Troughs

## Key Features

- Fitted with a standard float valve.
- Extra plastic for greater strength and durability.
- High freeze / thaw cracking resistance.

## Single Reservoir Water Trough

CODE	CAPACITY	DIMENSIONS (MM)
DT10	53 Ltr. / 12 Gal.	685 L x 457 W x 255 H





## Single Reservoir Corner Water Trough

CODE	CAPACITY	DIMENSIONS (MM)
DT27	100 Ltr. / 22 Gal.	940 L x 660 W x 335 H



## Double Reservoir Water Troughs

CODE	CAPACITY	DIMENSIONS (MM)
DT20	100 Ltr. / 22 Gal.	900 L x 500 W x 430 H
DT30	136 Ltr. / 30 Gal.	1193 L x 482 W x 280 H
DT40	180 Ltr. / 40 Gal.	1298 L x 472 W x 579 H



## Double Reservoir Fast-Fill Water Trough

CODE	CAPACITY	DIMENSIONS (MM)
DT30FF	136 Ltr. / 30 Gal.	1250 L x 475 W x 310 H



- Fitted with a fast-flow float valve (up to 95L/min @ 3 bar pressure).
- Valve protected within a plastic compartment with easy access for servicing.



# Lamb Housing

## Single Hutch

CODE	DIMENSIONS (MM)
CH100	1450 W x 1225 H x 1350 L

- Can be used to provide shelter for lambs or goats.



## Large Single Hutch

CODE	DIMENSIONS (MM)
CH1102	1320 W x 1448 H x 1956 L

- Can be used to provide shelter for lambs or goats.
- Fitted with a rear door, ideal for adding additional bedding.



## Single Hutch Frame

CODE	DIMENSIONS (MM)
SCH1	2083 W x 2083 L x 1219 H

Suitable for CH1102.

- Buckets and brackets not included.





# Feed Storage Bins

The JFC feed storage bins are the perfect solutions for storing meal on the farm. They can be easily transported with a forklift, bale handler or loader and can be sited in close proximity to the feeding location in the field.

The amount of labour and time involved in feeding as a result is significantly reduced for the farmer. The meal is kept clean and dry, making it the ideal solution for storing meal externally.

## Standard Feed Storage Bins

CODE	CAPACITY	DIMENSIONS (MM)
SB100	100 Ltr. / 22 Gal.	660 W x 580 D x 540 H
SB175	175 Ltr. / 38.5 Gal.	860 W x 860 D x 645 H
SB350	350 Ltr. / 77 Gal.	1050 W x 975 D x 765 H

- Stores and protects feed from harsh weather and pests.
- Suitable for locking if required.
- These bins can alternatively be used for storing home fuels or grit.



## Half Tonne Meal Bin

CODE	CAPACITY	DIMENSIONS (MM)
CMB1	600kg / 1000L	1200 W x 1200 D x 1360 H

- Strong & durable feed storage bin.
- Wide opening at the top and a lockable lid.
- Fitted with a drain off for ease of cleaning and emptying.
- Suitable for forklift, bale handler / loader transporting.



# One Tonne Meal Bin

CODE	CAPACITY	DIMENSIONS (MM)
CMB02	1200kg / 2000L	2000 W x 1080 D x 1360 H

- Strong and durable feed storage bin.
- 2 wide openings at the top and 2 independent lockable lids.
- Fitted with a drain off for ease of cleaning and emptying.
- Suitable for forklift, bale handler / loader transporting.

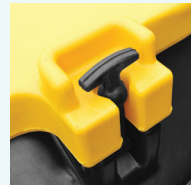


# Cubic Meter Meal Bin

CODE	CAPACITY	DIMENSIONS (MM)
CMB04	750kg / 1000L	1400 L x 1220 W x 960 H

**PRODUCT UPGRADE**

- Save €€'s per fill versus using bags.
- Keeps meal clean and dry.
- Low profile for ease of access when filling / emptying.
- Labour & time saving feeding.
- Fits in standard 8x4 car trailer.
- Suitable for forklift, bale handler / loader transporting.



# Wheelbarrows & ATV Equipment








# Wheelbarrows

JFC's range of innovative wheelbarrows are ideal for agricultural use. Each wheelbarrow is fitted with a galvanised metal frame and roller bearing pneumatic wheels to deliver superior manoeuvrability and smooth handling. They are tough, durable and surprisingly lightweight in use, even with heavy loads. Colour options available on request.

## Tipping Wheelbarrows

CODE	CAPACITY	DIMENSIONS (MM)	COLOUR OPTIONS
TWB250	250 Litre	1830 L x 860 W x 860 H	
TWB400	400 Litre	1800 L x 900 W x 950 H	
TWB500	500 Litre	1830 L x 1100 W x 910 H	

JFC's innovative tipping mechanism requires minimum effort to transport and tip heavy bulky loads.



## Wheelbarrow Covers

CODE	SUITABLE FOR
TWB250-C	TWB250
TWBG-C	TWBG + TWB2-G



JFC Wheelbarrow Covers are ideal for protecting contents from snow, wind and rain. They're designed to ensure that water does not sit, but runs off keeping load dry.



## Fixed Body Wheelbarrow

CODE	CAPACITY	DIMENSIONS (MM)	COLOUR OPTIONS
TWBG	250 Litre	1800 L x 865 W x 720 H	

- Easy to use fixed body barrow.
- Suitable for transporting new born calves and other smaller animals.
- Colour available on request.



## Fixed Body Swivel Wheelbarrow

CODE	CAPACITY	DIMENSIONS (MM)	COLOUR OPTIONS
TWB2-G	250 Litre	1575 L x 865 W x 720 H	

- Fitted with a heavy duty 200mm swivel wheel.
- Suitable for use on level ground.
- Colour available on request.



## Slimline Feed Wheelbarrow

<b>CAPACITY</b>	250 Litre
<b>DIMENSIONS</b>	1200 L x 600 W x 800 H
<b>CODE</b>	<b>DESCRIPTION</b>
TWB7	Narrow Wheelbarrow
TWB7-PL	Plastic Lid For TWB7
TWB7-L	Hinged Lid For TWB7
TWB7-D	Wooden Divider For TWB7

- 4 wheel barrow with 2 swivel wheels for optimum manoeuvrability.
- Narrow shape makes it suitable for passageways in farm buildings.
- 2 varieties of lids and a divider available separately.






# ATV Trailers & Accessories

JFC's range of trailers and boxes are particularly suited for All-Terrain-Vehicles (ATV) or Quad bikes. Each trailer is fitted with 2 pneumatic wheels, galvanised chassis and an easy-to-use tipping mechanism. The heavy duty galvanised frame ensures the trailer is suited to harsh terrain.

## NOTE

ATV range not suitable for highway use.

## ATV Trailers

CODE	CAPACITY	FEATURES	DIMENSIONS (MM)	COLOURS
ATV250	250 Litre	Fitted with eyelet hitch. (Lever ball hitch fitted on request)	1700 L x 800 W x 780 H	
ATV400-2	400 Litre	Fitted with lever ball hitch.	2200 L x 1200 W x 900 H	
ATV500-2	500 Litre	Metal support frame suitable for heavy loads. Fitted with lever ball hitch.	2316 L x 1425 W x 940 H	

- Lever ball locking hitch.
- Spring loaded locking mechanism.
- Strong hinge point.
- Protective plate on tipping point.
- Heavy duty pneumatic road tyres.



ATV500-2

# Quad Kart

CODE	CAPACITY	DIMENSIONS (MM)	DOOR OPTION
ATV1200R	1275 Ltr / 280 Gal.	2460 L x 1280 W x 1250 H	Steel
ATV1200	1275 Ltr / 280 Gal.	2460 L x 1280 W x 1250 H	Plastic

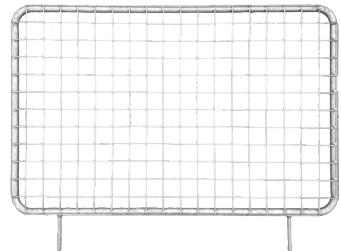
- Tough polyethylene body mounted onto a galvanised steel frame.
- Aluminium checker plate floor for extra grip.
- Galvanised steel ramp.
- Suitable for carrying sheep, calves, fuel or feed.
- Quad trailer dividing gate available as an optional extra.



## Quad Trailer Dividing Gate

CODE	SUITABLE FOR	DIMENSIONS (MM)
ATV1200-G	ATV1200R & ATV1200	970 W x 740 H x 30 D

Galvanised steel construction.



## ATV Front Carrier Box

CODE	CAPACITY	DIMENSIONS (MM)
ATV-CBD	200 Ltr. / 43 Gal.	830 W x 960 D x 670 H



## ATV Front Carrier Box Lid

CODE	DIMENSIONS (MM)
ATV-CBL	720 W x 885 D x 105 H



## ATV Rear Carrier Box

CODE	CAPACITY	DIMENSIONS (MM)
ATV-CBS	150 Ltr. / 32 Gal.	830 W x 960 D x 385 H





# Hygiene, Safety & Fencing Products



# Medical & Chemical Storage

## Medi-Safe Storage Cabinet

CODE	CAPACITY	DIMENSIONS (MM)
MS004	Overall 180L / Bunded 16L	915 H x 540 W x 435 D

- Wall mountable medical cabinet for the safe storage of medicines and veterinary documents.
- Fitted with two aluminium shelves.
- Shelf Capacity 40kg.
- Lockable unit for security.



## Wall Mountable Chemical Storage Cabinet

CODE	CAPACITY	DIMENSIONS (MM)
SC-03	Overall 180L / Bunded 16L	915 H x 540 W x 435 D

- Wall mountable cabinet for the safe storage of pesticides and other farm chemicals.
- Fitted with two aluminium shelves.
- Shelf Capacity 40kg.
- Bunded safety feature controls any possible spillages.
- Lockable unit for security.
- Complete with vent to rear.



## Large Free-Standing Chemical Storage Cabinets

CODE	CAPACITY	DIMENSIONS (MM)
SC-01	Overall 700L / Bunded 125L	1310 H x 1220 W x 520 D
SC-02	Overall 380L / Bunded 60L	1310 H x 685 W x 520 D

- Free standing cabinet for the safe storage of pesticides and other farm chemicals.
- Fitted with two aluminium shelves (SC-02), 2 square mesh shelves (SC-01).
- Shelf Capacity 60kg for SC-02, 250kg for SC-01.
- Bunded safety feature controls any possible spillages.
- Lockable unit for security.
- Fitted with drain off.
- Complete with vent to rear.



SC-02



SC-01

# Personnel & Vehicle Baths

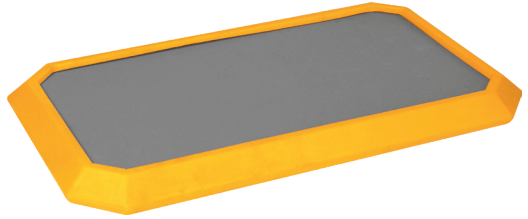
## Disinfectant Footbath (For Use With A Step)

CODE	DIMENSIONS (MM)
FBP01	534 L x 305 W x 64 D



## Large Disinfectant Footbath

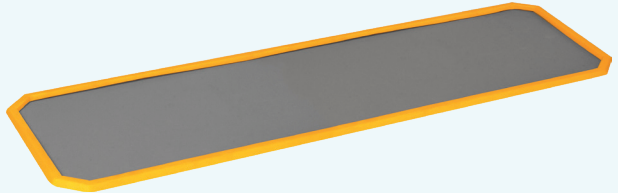
CODE	DIMENSIONS (MM)
FBP05	1000 L x 580 W x 55 D



## Vehicle Disinfectant Bath

CODE	DIMENSIONS (MM)
FBP06	2620 L x 1010 W x 55 D

4 vehicle disinfectant baths required to cover all the wheels of one artic lorry.



## Hazard Cones

CODE	DESCRIPTION	DIMENSIONS (MM)
YTC01	Blank Cone	710 H x 510 W x 442 D
YTC02	Machinery Crossing	710 H x 510 W x 442 D
YTC03	Silage Cutting	710 H x 510 W x 442 D
YTC04	No Parking	710 H x 510 W x 442 D
YTC05	Cows Crossing	710 H x 510 W x 442 D
YTC06	Wet Floor	710 H x 510 W x 442 D
YTC07	Hedge Cutting	710 H x 510 W x 442 D
YTC08	Mud On Road	710 H x 510 W x 442 D





# Sheep Hygiene

## Sheep Dipping Tub

CODE	CAPACITY	DIMENSIONS (MM)
SD250	1136 Ltr / 250 Gal.	2743 L x 940 W x 1219 D

- Versatile tank for dipping or bathing sheep in disinfectant solution.
- Designed for ground installation.
- Stepped exit for smooth passage.



## Sheep Footbath (Smooth Base)

CODE	CAPACITY	DIMENSIONS (MM)
FB1	81 Ltr / 18 Gal.	1540 L x 570 W x 140 D

- Smooth base is effective in the treatment of claw / hoof diseases including interdigital dermatitis.
- Quick and easy to set up anywhere on the farm.



## Sheep Footbath (Profiled Base)

CODE	CAPACITY	DIMENSIONS (MM)
FB5	145 Ltr / 32 Gal.	2451 L x 570 W x 203 D

- Profiled base opens hooves for extra penetration of solution.
- Quick and easy to set up anywhere on the farm.
- Narrow shape makes it ideal for mobile sheep races.
- Ends interlock to form the required length.
- Ideal for when a pre-wash is required prior to solution bathing.



## Narrow Interlocking Footbath (Smooth Base)

CODE	CAPACITY	DIMENSIONS (MM)
FB7	150 Ltr / 33 Gal.	2525 L x 690 W x 150 D

- Fits in standard crush.
- Interlocking joints for connecting multiple baths.
- Suitable for when a pre-wash is required prior to solution bathing.



# TidyWrap Recycling Bin

The TidyWrap is the ideal way to store waste plastic bale wraps. The bin is bottom less and has a removable lid which keeps the plastic clean and dry. When used effectively the bin can significantly reduce collection costs as the overall weight is much less if the plastic were wet and contaminated. The TidyWrap is designed specifically to allow a bale wrap to be used as a liner saving on the cost of buying a new liner each time.

## Key Features

- Keeps bale wraps clean and dry reducing the overall weight.
- Designed specifically so a bale wrap can be used as a cost effective liner.
- Bungee cord supplied to secure the liner in place.
- Bin lifts easily over the plastic bale.

CODE	CAPACITY	DIMENSIONS (MM)
TRB1	150-200 Plastic Bale Wraps*	1250 Ø x 1000 H

\* Capacity depends on level of contamination and compaction used.



## TidyWrap User Guide

The images above show how to cut strips into the bale which create four tie handles that form the liner. The liner is secured to the bin with a bungee cord (supplied) and is now ready to store 150-200 bale wraps. Once full these handles are tied together and the bin can be easily lifted off leaving a full plastic bale which is ready for collection.

# 2G Fencing Systems

JFC's innovative polyethylene fence posts are extremely robust and durable with a life expectancy in excess of 30 years. Both solid and hollow posts are available to suit any fencing application.

## Benefits

- Will not rot, decay, shrink or decompose unlike traditional wooden posts.
- Save time, money and labour.
- Extremely weather resistant (UV stabilized plastic).
- Superior cohesion between plastic and the ground provides for a strong and sturdy hold.
- Will not splinter and have a smooth surface for animal safety and ease of handling.

## 2G Hollow Posts

CODE	DIMENSIONS (MM)
STK70-1380	70 Ø x 1380 H
STK95-1800	95 Ø x 1800 H

Ideally suited to electrical paddock fencing. Wire is attached by using drilling a 10mm hole in the post and securing the wire with a 2G Fencing Clip (WFC01). Alternatively a hole can be drilled through the post and the wire fed through.

- Strong and durable with sufficient flexibility to withstand impact.
- Plastic is a natural insulator so voltage stays on the wire and eliminates short circuits.
- Lightweight and easy to install, ideal for use in restricted areas.



See our full range of 2G Fencing at:  
[jfcagri.com/fencing](http://jfcagri.com/fencing)



# AGRI

*Supporting Farmers  
With Innovative Solutions*

It is believed that the information provided is correct. Products and prices marketed by JFC are subject to continuous development and JFC reserve the right to alter information.

Published in Ireland. Artwork by JFC Marketing Department.

© 2018 JFC Manufacturing Co. Ltd. All rights reserved.

## **JFC AGRI IRELAND**

Weir Road,  
Tuam,  
Co. Galway,  
H54 RX46,  
Ireland

Tel. +353 93 22952  
Email. [info@jfcagri.com](mailto:info@jfcagri.com)

     @JFCagri

[www.jfcagri.com](http://www.jfcagri.com)

